

Best Point BP100 SERIES WIPERS

Best Edge Wipers



FEATURES

- 100% continuous filament polyester
- Double knit
- Heat sealed edge
- Available weights: 135 g/m² , 145 g/m²
- Available sizes: 5" x 5", 6" x 6", 9" x 9", 15" x 15"
- Chemical and abrasion resistant
- Low levels of particles and extractables
- Lot to lot traceable
- Sterile version available

APPLICATIONS

- Ideal for multiple applications
- Superior wipers for general cleaning in ISO Class 5-7 cleanrooms

TECHNICAL DATA

Performance Characteristics			
Property	Unit	Value	Value
Basic Weight	g/m ²	135	145
Absorbency			
Extrinsic	ml/m ²	298	375
Intrinsic	ml/g	2.5	2.1
Sorptive rate	g/m ²	0,5	0
Contamination Characteristics			
Property	Unit	Value	Value
Particle counts			
LPC ≥ 0.5 µm	g/m ²	counts/cm ²	900
APC ≥ 0.3 µm	g/m ²	counts/m ³	6500-6800
Non volatile residue (NVR)			
DIW extractant	g/m ²	g/m ²	0.0011-0.0013
IPA extractant	g/m ²	g/m ²	0.0068-0.0085
Extractable counts (Ions)			
Sodium	g/m ²	ppm	< 0.20
Potassium	g/m ²	ppm	< 0.20
Magnesium	g/m ²	ppm	< 0.06
Calcium	g/m ²	ppm	< 0.01
Chloride	g/m ²	ppm	< 0.02
Ammonium	g/m ²	ppm	< 0.09
Nitrate	g/m ²	ppm	< 0.10
Phosphate	g/m ²	ppm	< 0.04
Sulfate	g/m ²	ppm	< 0.07

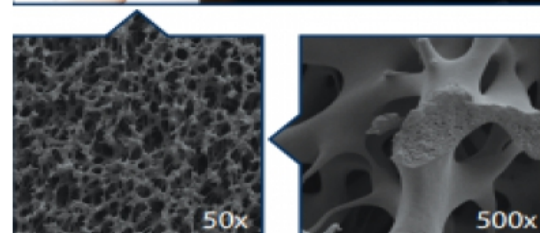
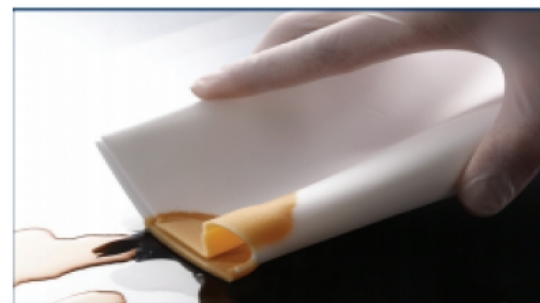


Best Point BP120 SERIES WIPERS

Best Edge Wipers

FEATURES

- 100% continuous filament polyester
- Double knit
- Heat sealed edge
- Available weights: 125 g/m² , 135 g/m²
- Available sizes: 4" x 4", 6" x 6", 9" x 9", 12" x 12"
- Chemical and abrasion resistant
- Low levels of particles and extractables
- Lot to lot traceable
- Sterile version available



APPLICATIONS

- Ideal for multiple applications
- Superior wipers for general cleaning in ISO Class 5-7 cleanrooms

TECHNICAL DATA

Performance Characteristics			
Property	Unit	Value	Value
Basic Weight	g/m ²	143	153
Absorbency			
Extrinsic	ml/m ²	2.4	2.7
Intrinsic	ml/g	240	250
Sorptive rate	g/m ²	0,5	0,7
Contamination Characteristics			
Property	g/m ²	Clean	Bed
Particle counts	g/m ²	100	100
LPC ≥ 0.7 μm	g/m ²	900	750
APC ≥ 0.5 μm	g/m ²	6500	5400
Non volatile residue (NVR)	g/m ²	0,10	0,10
DIW extractant	g/m ²	0,0012	0,0013
IPA extractant	g/m ²	0,014	0,052
Extractable counts (Ions)	g/m ²	<0,10	<0,20
Sodium	g/m ²	<0.5	< 0.04
Potassium	g/m ²	< 0.06	< 0.01
Magnesium	g/m ²	< 0.02	< 0.09
Calcium	g/m ²	< 0.10	< 0.04
Chloride	g/m ²	< 0.07	< 0.07
Ammonium	g/m ²	< 0.01	< 0.02
Nitrate	g/m ²	< 0.09	< 0.10
Phosphate	g/m ²	< 0.07	< 0.10
Sulfate	g/m ²	< 0.04	< 0.04

